

**RSW TR**  
invest group

*RSW TR İNVEST GROUP SUNAR: 'EKOTEKNOPARK NEDİR?'*

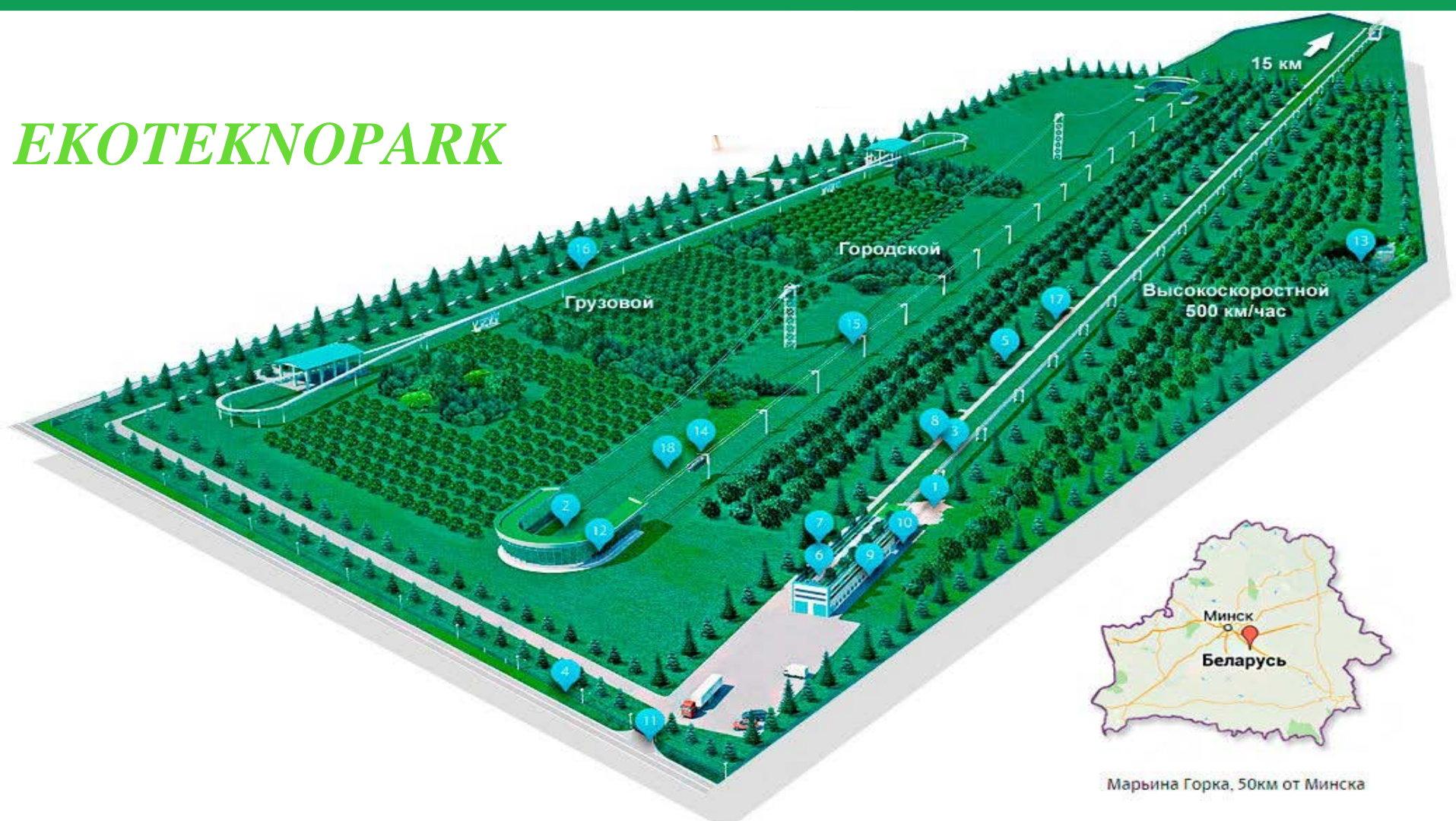
---

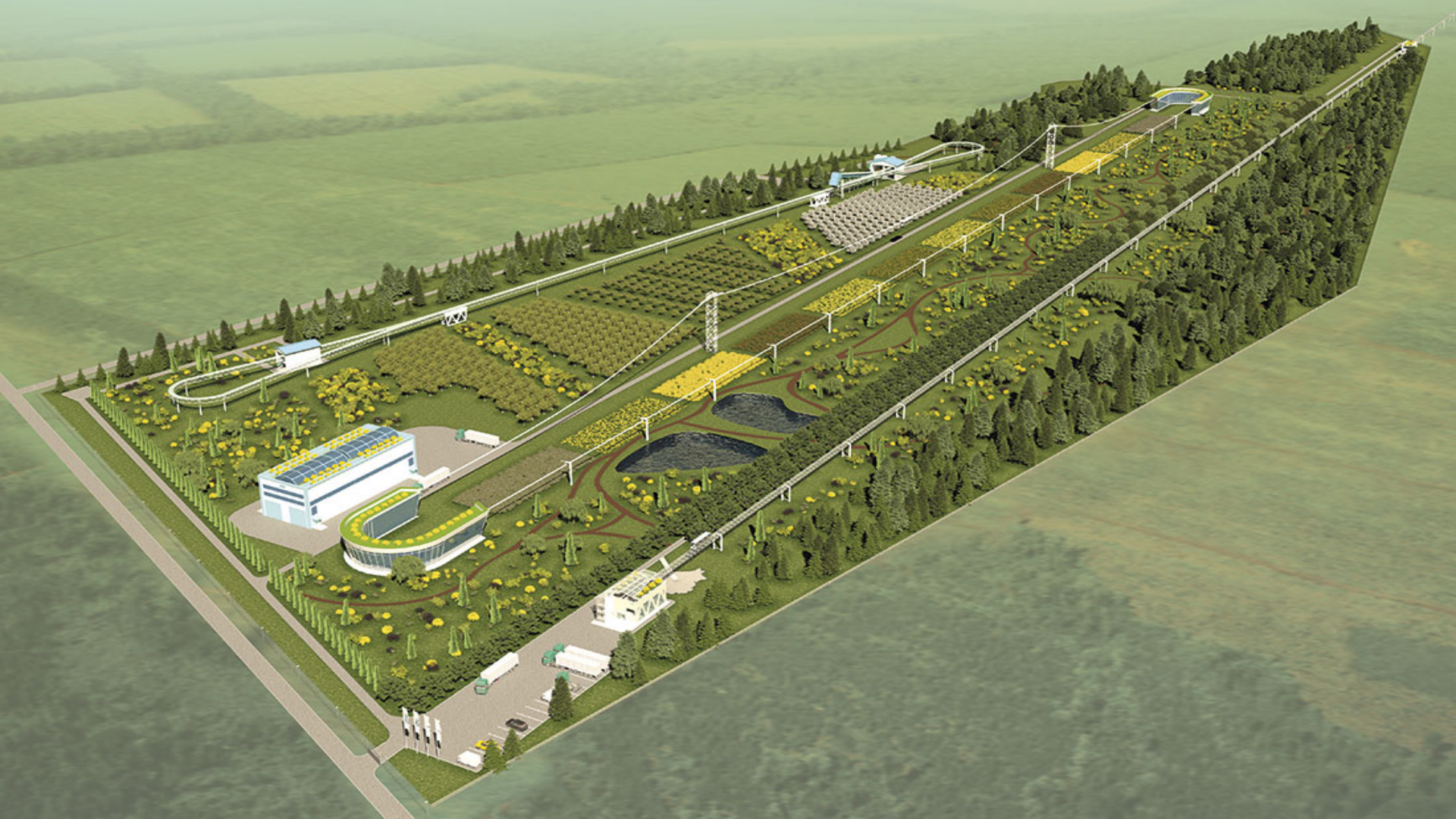
## *SKYWAY*

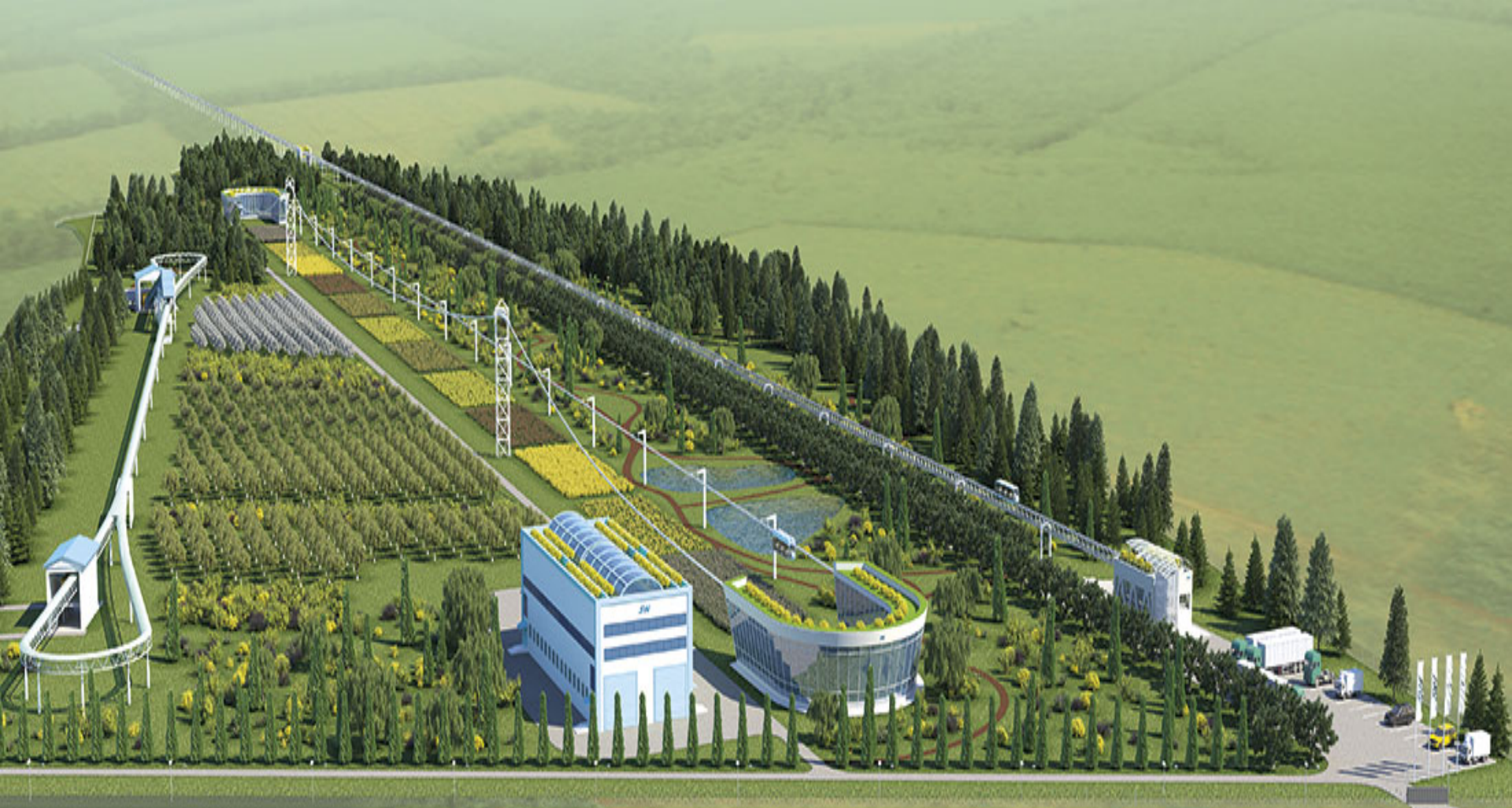
*Dünyayı temiz ve güvenli hale getirmek için tasarlanmış  
21. yüzyılın standartlarını karşılayan ulaşım sistemidir.*

---

# ЕКОТЕКНОПАРК









**PARK YOLU, KORULUK, BAHÇE, AĞAÇLAR VE KOMPOZİSYON ....**







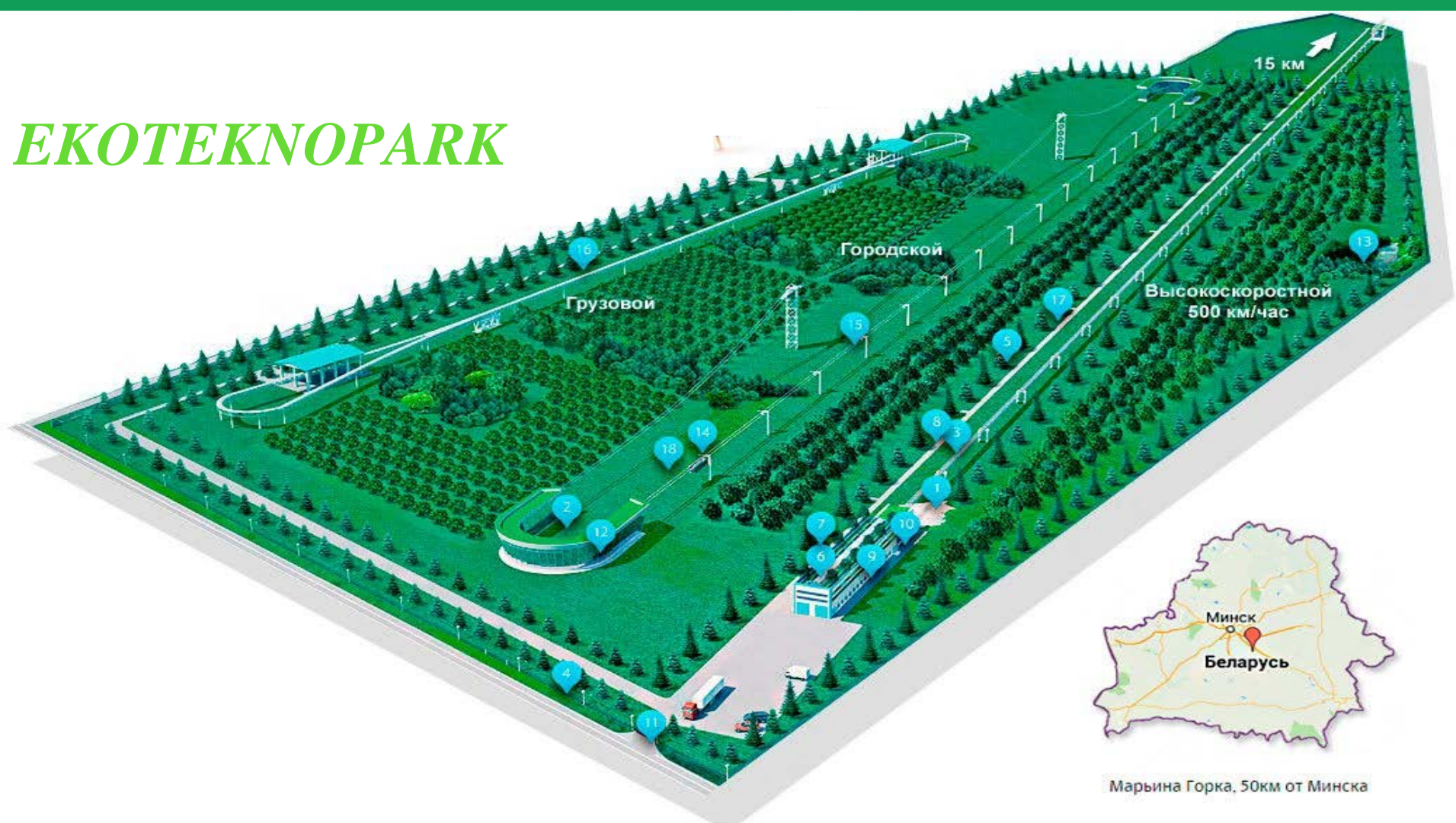
Степь  
Степь 0.2



***ÜRETİM VE MONTAJ ATÖLYE BİNASI***



# ЕКОТЕКНОПАРК



15 км

Грузовой

Городской

Высокоскоростной  
500 км/час

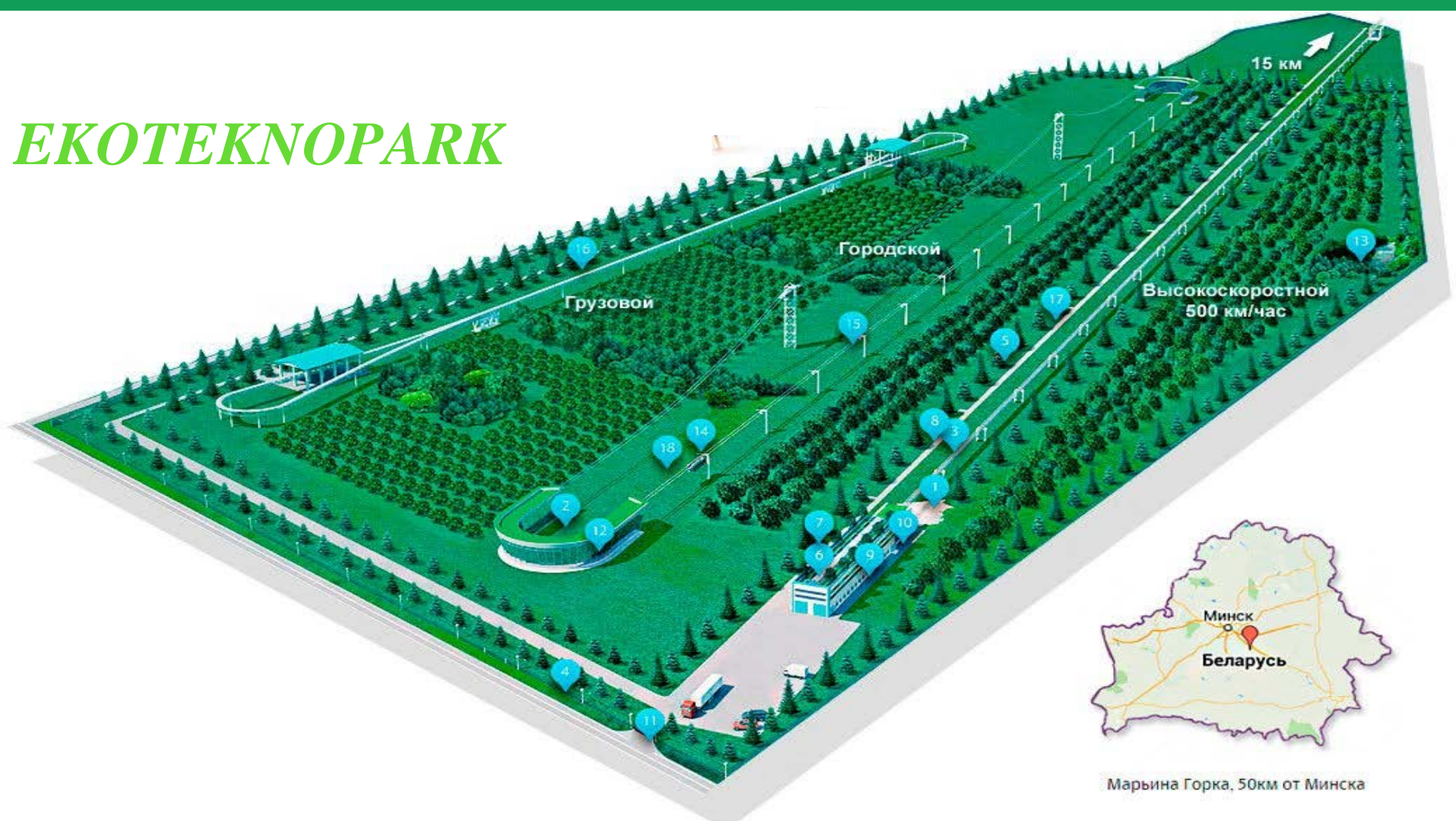
Минск

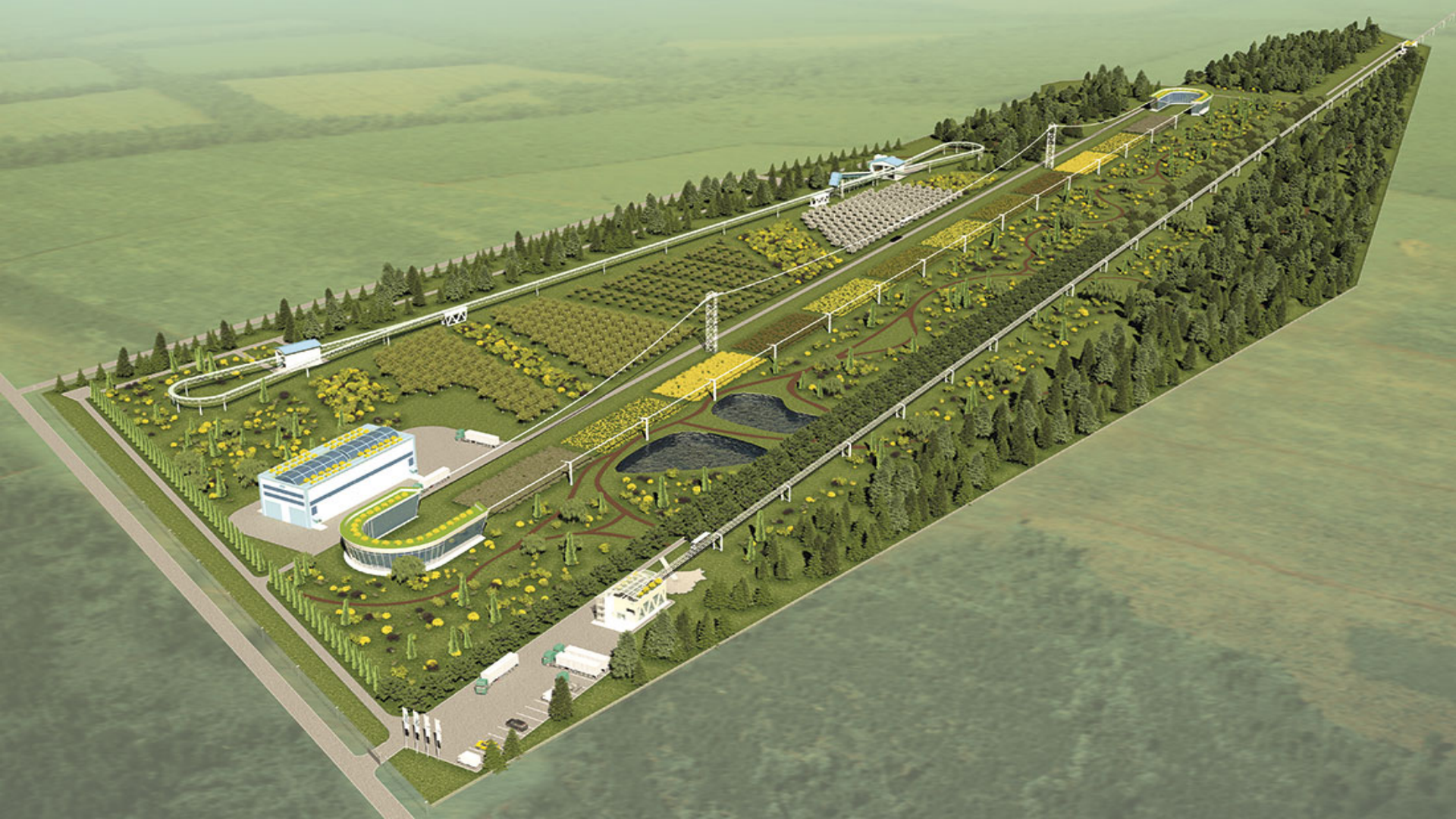
Беларусь

Марына Горка, 50км от Минска

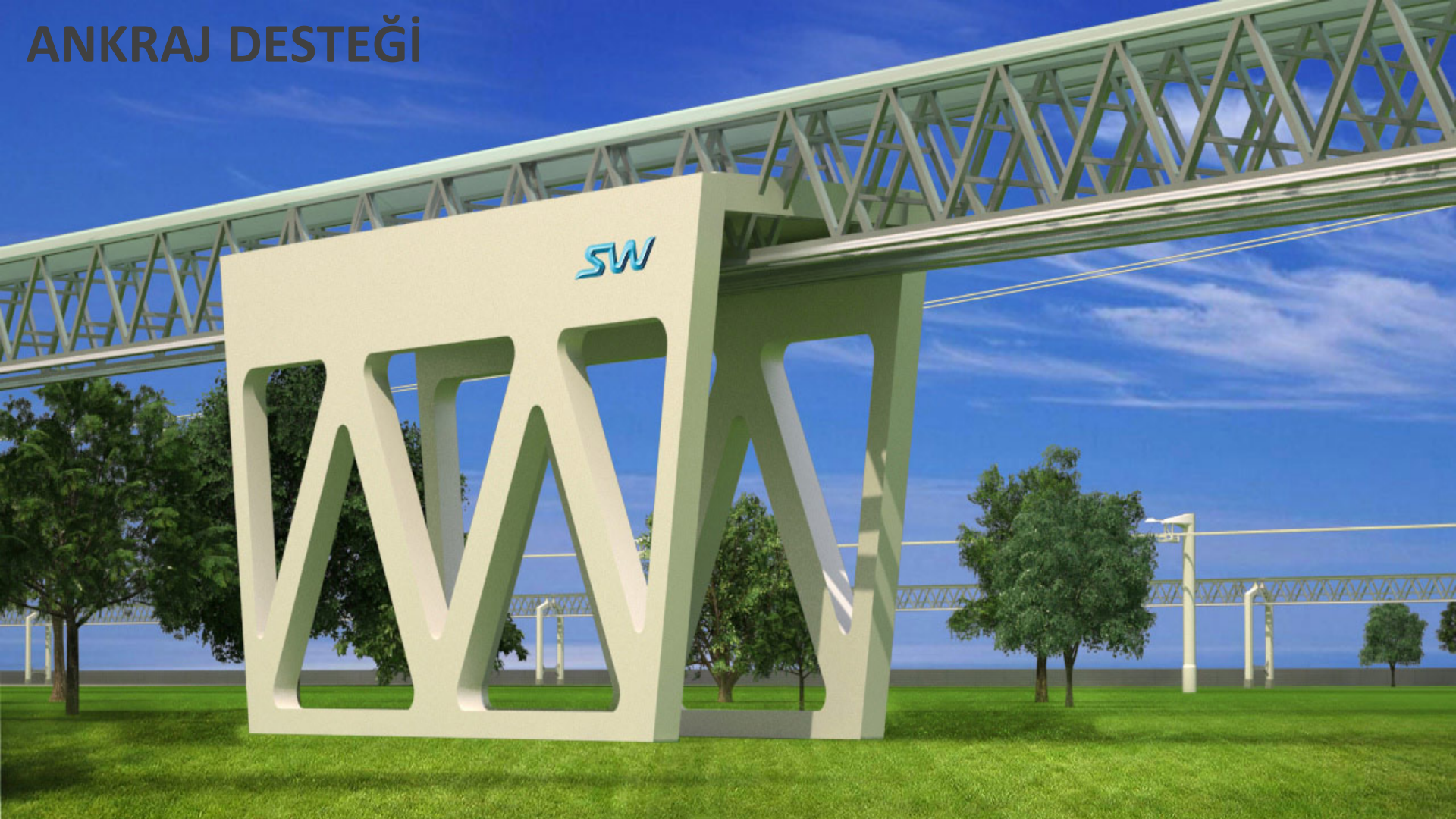


# ЕКОТЕКНОПАРК





# ANKRAJ DESTEĞİ







Destek metal yapı görünümündedir ve prefabrik betonarme yapıdır.

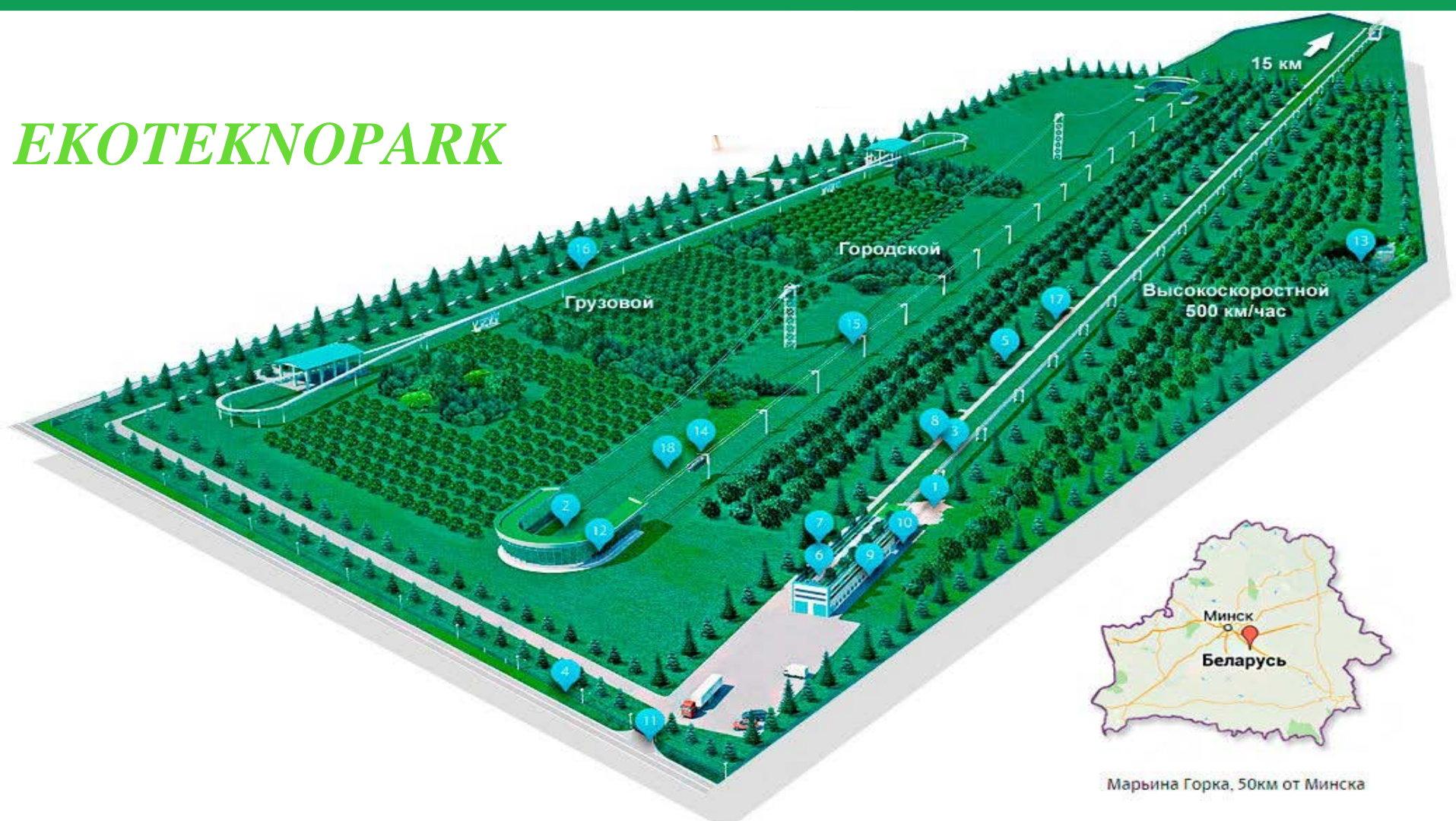
# ANKRAJ DESTEKLERİNİN KURULUMU



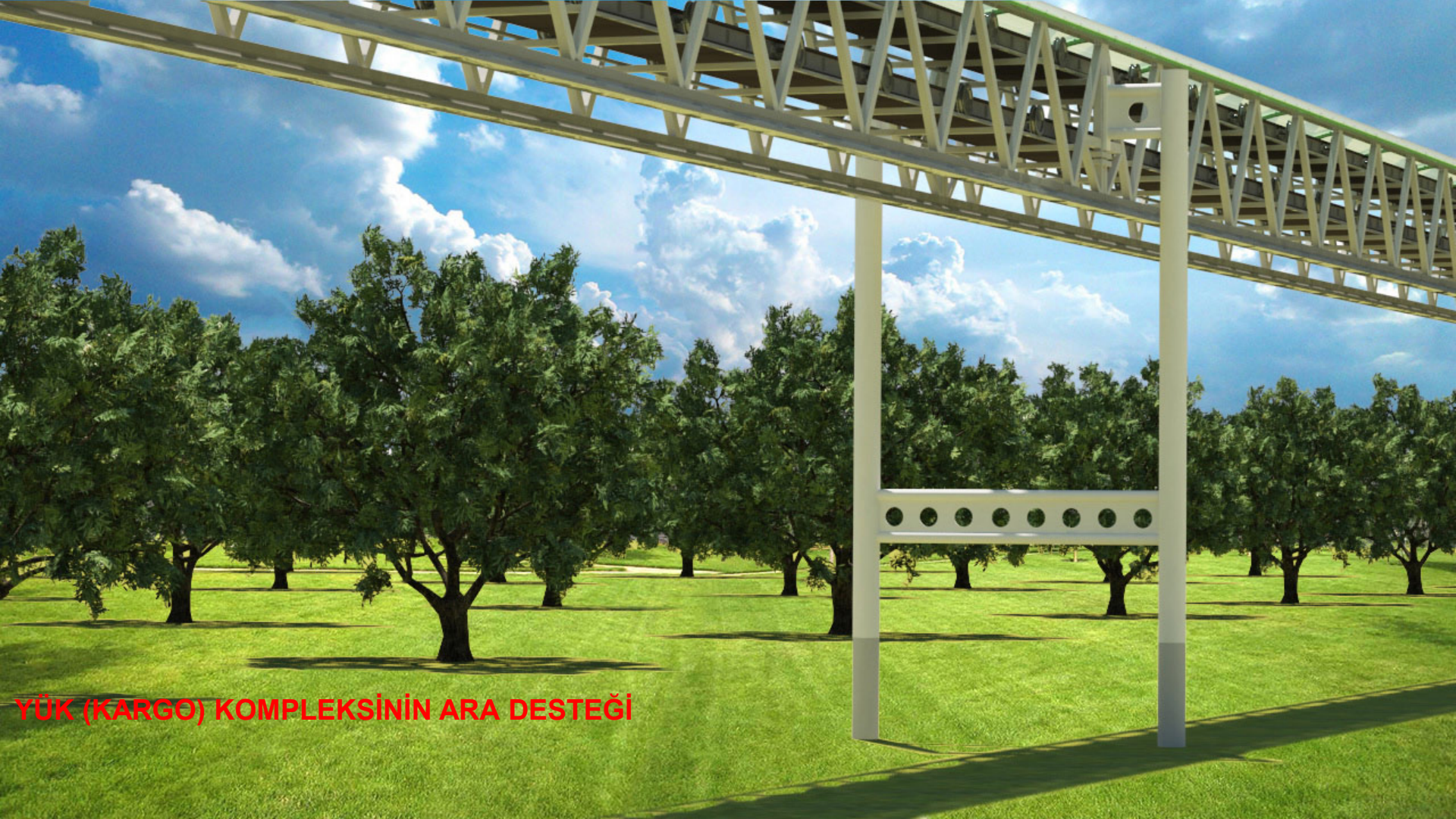


*Ankraj desteđi uçuşun çok daha hafif olmasını sağlar. Klasik kirişlerde %90 veya daha fazla ağırlık taşınır ama Skyway ulaşım sisteminde tüm uçuşta %20-30 olur. Tüm Terkiplerde ise %70 ten fazla.*

# ЕКОТЕКНОПАРК

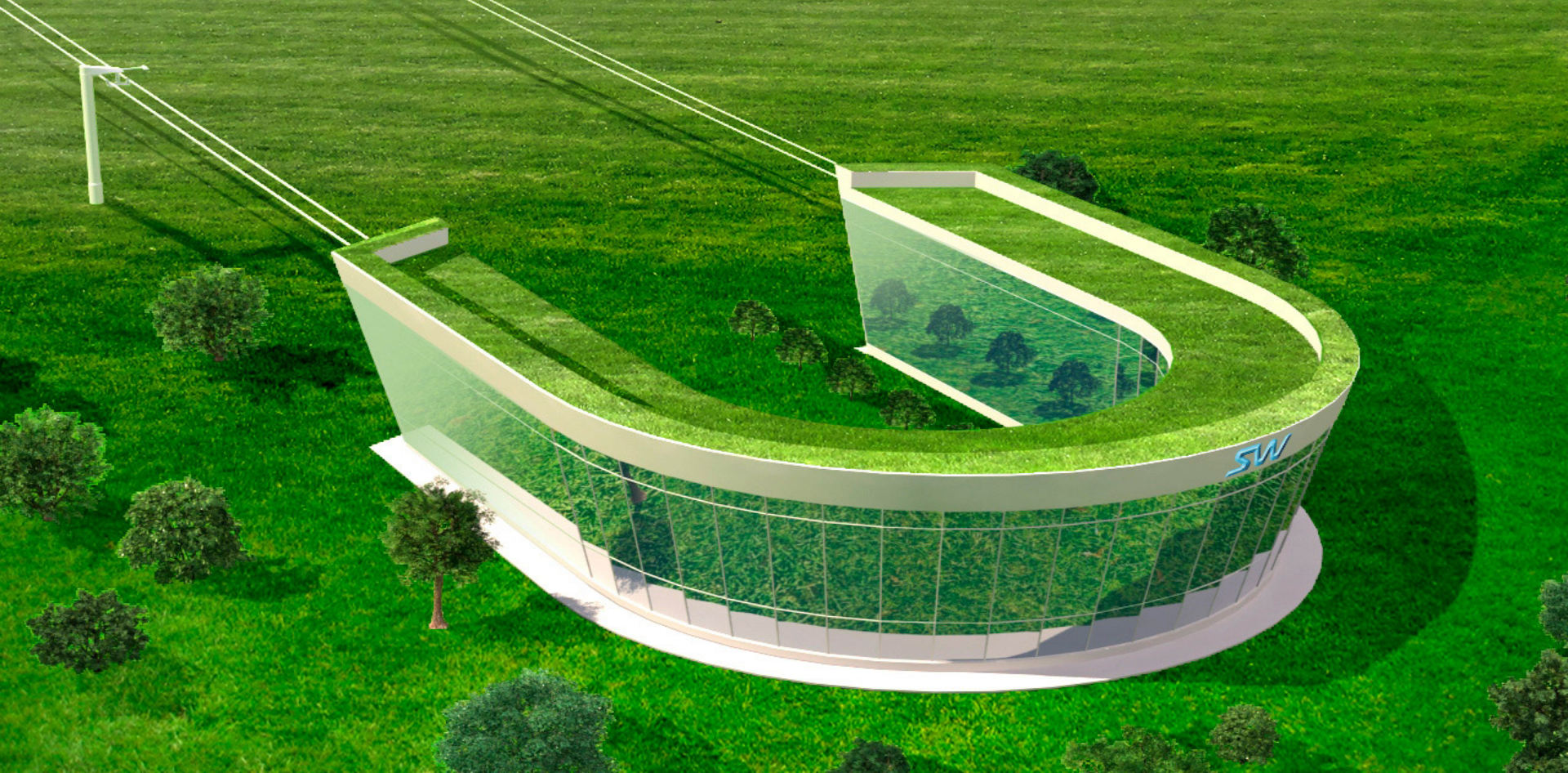


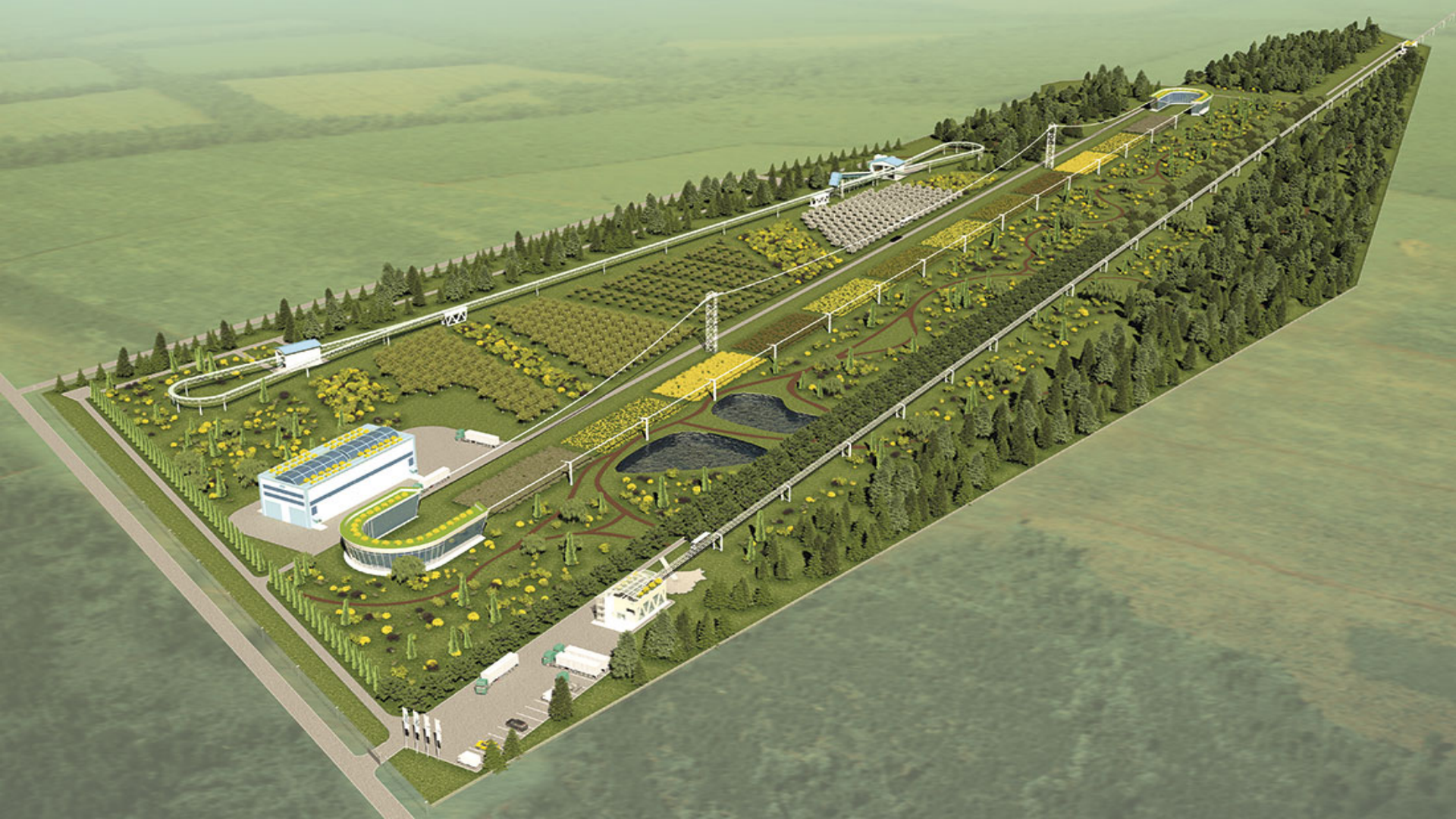
Марына Горка, 50км от Минска



**YÜK (KARGO) KOMPLEKSİNİN ARA DESTEĞİ**

# ASMA UNİBUS MODELİ İÇİN ANKRAJ DESTEKLERİ

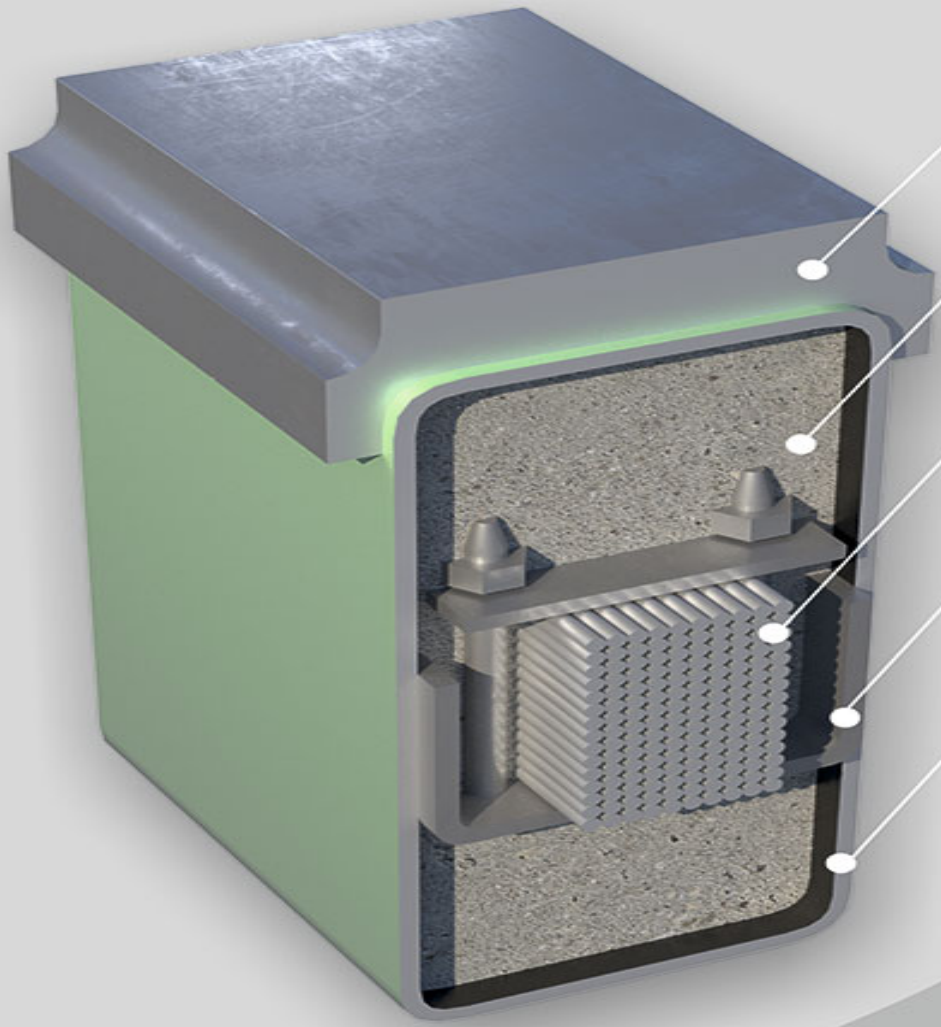












**çelik ray kafası**

**özel beton**

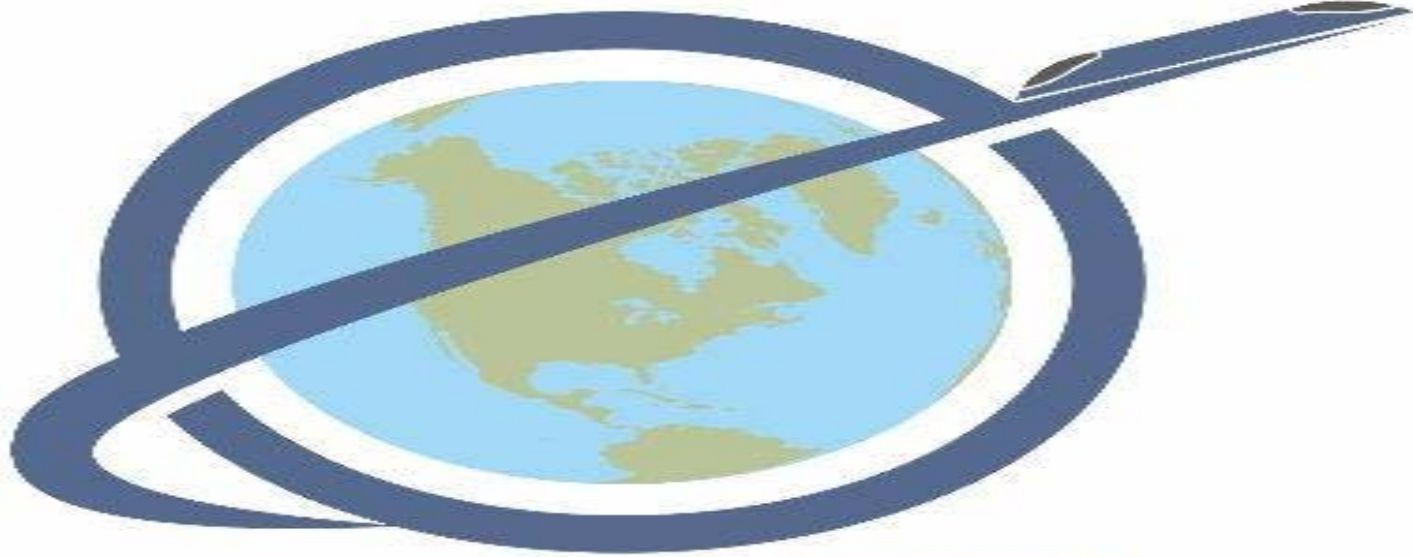
**teller (ön gerilimli çelik halat demeti)**

**güçlendirici element ray gövdesi halatları**

**ray gövdesi**

*İLGİNİZ İÇİN TEŞEKKÜR EDERİZ,*

*HAFTAYA GÖRÜŞMEK DİLEĞİYLE...*



**RSW TR**  
invest group

*RSW TR İNVEST GROUP SUNDU: 'EKOTEKNOPARK NEDİR?'*